



KÜLSAN

SINCE 1974

for Professionals



about us

History

An organization can only survive and succeed with the total involvement of its customers, employees, suppliers and managers in the continuous improvement process.

Having this philosophy, KÜLSAN A.S. was established by Hasan Kulahcioglu and other family shareholders in Istanbul in 1974. Since then, the company has been successfully represented by its young and dynamic internal staff and customers both in Turkish market and in the global market.

First export was made to Dubai in 1987 and today, Külsan has become a well known trademark selling their products to fifty-five countries at five continents.

Mission

We aim to produce decorative and durable kitchen utensils for serving purpose satisfying utility while providing an aesthetical outlook.

Vision

We are committed to :
be the leading company producing a kitchen range of quality & variety creating difference
expand our market mainly in 3 continents Europe, Asia & Africa
adding value to all shareholders, staff, suppliers & customers



Index

Thermoset



- 01 Bergama
- 02 Classic
- 03 Soft
- 04 International
- 05 Accessories
- 06 Baby Life

Gastro Boutique



- 07 Bowls
- 08 Platters
- 09 Self Service
- 10 GN Containers

Arcoform



- 11 Laminated Trays
- 12 Decorated
Laminated Trays

Arcoplast

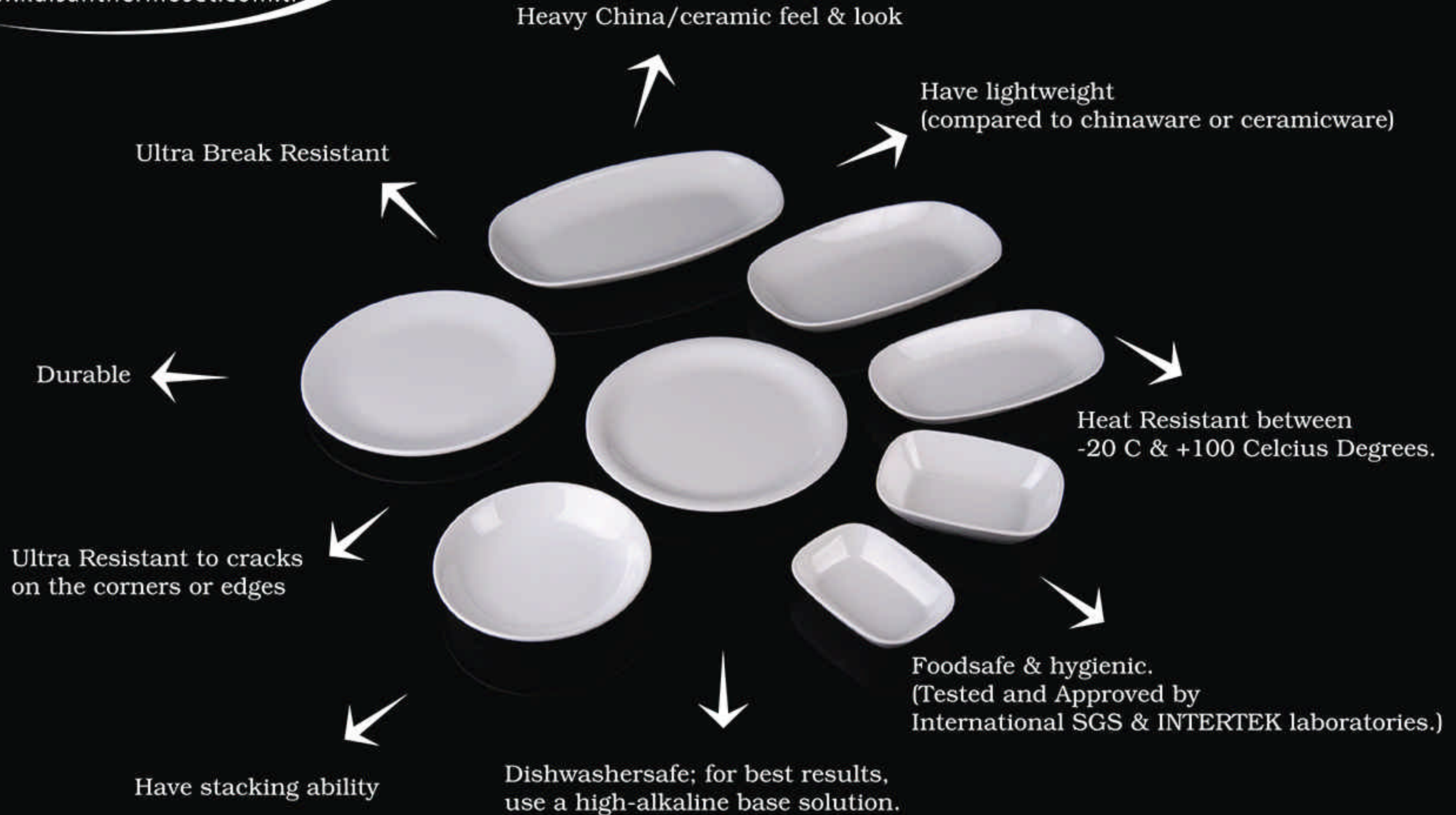


- 13 Fiber Polyester Trays
- Fast Food Trays
- Rubber Coated PP Trays
- 14 Polycarbonate Tumblers

Packing Details



- 15 Thermoset
- 16 Thermoset
- 17 Gastro Boutique
- 18 Polycarbonate
- 19 Arcoform



Care Instructions for THERMOSET

- * Do not heat food on this product.
- * Do not place them in an oven, microwave or hot water tubs/buffets.
- * Do not place them on top or under flame or grill.
- * Avoid using sharp knives which will scratch the surface.
- * Cleaning should take place promptly.
- * Do not use harsh or abrasive cleansers, steel wool, or scrubbers/ scouring pads to clean.
- * Do not use chlorine bleach or chlorine - based products on melamine products.
- * If staining occurs, pre-soak melamine products in sodium perborate base solution prior to dishwashing.
- * Some recommended sodium perborate base solutions include :
Dip-It by ECOLAB or DeClare Plus by DIVERSEY/LEVER.

CERTIFICATIONS



SGS
TEST REPORT NO : TR 125360 Date: January 29, 2019 Page 1 of 2

KÜLSAN MELAMİN PLASTİK SAN VE TİC. A.Ş.
ULUDAĞ BUĞYU MEYDANI AKACIK KADIKÖYÜ CAD NO 19
EĞILIMCIYI ANITLARI
TEL: 0216 471 58 58
E-MAIL:
www.kulsanthermoset.com.tr

The following sample(s) were submitted and identified by the client as:
MELAMİN PLAKLAR

TESTING PERIOD: DECEMBER 25, 2018 - JANUARY 09, 2019
TEST REQUESTED: To determine the Overall Migration in accordance with European Commission Directive 2002/72/EC relating to plastic materials and articles intended to come into contact with foodstuffs.

TEST METHOD: With reference to EN 1186-1:2002 for selection of conditions and test methods.
EN 1186-2:2002 aqueous food simulants by total immersion method.
EN 1186-2:2002 also as by total immersion method.

TEST RESULTS: Please refer to next page.

CONCLUSION: When tested as specified, the submitted sample comply with the overall migration requirements stated in European Commission Directive 2002/72/EC relating to plastic materials and articles intended to come into contact with foodstuffs.

Heavy Metal Migration
Cd, Pb, Ni, Cr, Cu, Zn, Mn, Fe

Formaldehyde Migration
Formaldehyde

For and on behalf of:
KÜLSAN MELAMİN PLASTİK SAN VE TİC. A.Ş.
Konya Sanayi Bölgesi
Konya Sanayi Alanı
Konya Sanayi Alanı
Konya Sanayi Alanı

SGS
Konya Sanayi Alanı
Konya Sanayi Alanı
Konya Sanayi Alanı



SGS
TEST REPORT NO : TR 125360 Date: January 29, 2019 Page 1 of 2

KÜLSAN MELAMİN PLASTİK SAN VE TİC. A.Ş.
ULUDAĞ BUĞYU MEYDANI AKACIK KADIKÖYÜ CAD NO 19
EĞILIMCIYI ANITLARI
TEL: 0216 471 58 58
E-MAIL:
www.kulsanthermoset.com.tr

The following sample(s) were submitted and identified by the client as:
MELAMİN PLAKLAR

TESTING PERIOD: DECEMBER 25, 2018 - JANUARY 09, 2019
TEST REQUESTED: To determine the Overall Migration in accordance with European Commission Directive 2002/72/EC relating to plastic materials and articles intended to come into contact with foodstuffs.

TEST METHOD: With reference to EN 1186-1:2002 for selection of conditions and test methods.
EN 1186-2:2002 aqueous food simulants by total immersion method.
EN 1186-2:2002 also as by total immersion method.

TEST RESULTS: Please refer to next page.

CONCLUSION: When tested as specified, the submitted sample comply with the overall migration requirements stated in European Commission Directive 2002/72/EC relating to plastic materials and articles intended to come into contact with foodstuffs.

Heavy Metal Migration
Cd, Pb, Ni, Cr, Cu, Zn, Mn, Fe

Formaldehyde Migration
Formaldehyde

For and on behalf of:
KÜLSAN MELAMİN PLASTİK SAN VE TİC. A.Ş.
Konya Sanayi Bölgesi
Konya Sanayi Alanı
Konya Sanayi Alanı
Konya Sanayi Alanı

SGS
Konya Sanayi Alanı
Konya Sanayi Alanı
Konya Sanayi Alanı



Intertek
TEST REPORT
REPORT NUMBER : TURANM016 Page 1 of 2

APPLICANT NAME: KÜLSAN MELAMİN PLASTİK SAN VE TİC. A.Ş.
ADDRESS: Konya Sanayi Bölgesi Akacık Cad. No: 19 EĞILIMCIYI ANITLARI SANAYİ ALANI
Konya Sanayi Alanı Konya Sanayi Alanı Konya Sanayi Alanı

SAMPLE DESCRIPTION: One sample white China Melamine Thermoset Dinner Plate (1 pc)

DATE IN: 01 October 2018
DATE OUT: 01 October 2018
CLIENT NAME: KÜLSAN MELAMİN PLASTİK SAN VE TİC. A.Ş.
ARTICLE NO: 1253

Element	Unit	Result	Max. Permitted
Cadmium	mg/kg	0.0001	0.001
Lead	mg/kg	0.0001	0.001
Nickel	mg/kg	0.0001	0.001
Chromium	mg/kg	0.0001	0.001
Copper	mg/kg	0.0001	0.001
Zinc	mg/kg	0.0001	0.001
Manganese	mg/kg	0.0001	0.001
Iron	mg/kg	0.0001	0.001

Formaldehyde Migration
Formaldehyde

For and on behalf of:
KÜLSAN MELAMİN PLASTİK SAN VE TİC. A.Ş.
Konya Sanayi Bölgesi
Konya Sanayi Alanı
Konya Sanayi Alanı
Konya Sanayi Alanı

Intertek
Konya Sanayi Alanı
Konya Sanayi Alanı
Konya Sanayi Alanı



Intertek
TEST REPORT
REPORT NUMBER : TURANM016 Page 1 of 2

APPLICANT NAME: KÜLSAN MELAMİN PLASTİK SAN VE TİC. A.Ş.
ADDRESS: Konya Sanayi Bölgesi Akacık Cad. No: 19 EĞILIMCIYI ANITLARI SANAYİ ALANI
Konya Sanayi Alanı Konya Sanayi Alanı Konya Sanayi Alanı

SAMPLE DESCRIPTION: One sample white China Melamine Thermoset Dinner Plate (1 pc)

DATE IN: 01 October 2018
DATE OUT: 01 October 2018
CLIENT NAME: KÜLSAN MELAMİN PLASTİK SAN VE TİC. A.Ş.
ARTICLE NO: 1253

Element	Unit	Result	Max. Permitted
Cadmium	mg/kg	0.0001	0.001
Lead	mg/kg	0.0001	0.001
Nickel	mg/kg	0.0001	0.001
Chromium	mg/kg	0.0001	0.001
Copper	mg/kg	0.0001	0.001
Zinc	mg/kg	0.0001	0.001
Manganese	mg/kg	0.0001	0.001
Iron	mg/kg	0.0001	0.001

Formaldehyde Migration
Formaldehyde

For and on behalf of:
KÜLSAN MELAMİN PLASTİK SAN VE TİC. A.Ş.
Konya Sanayi Bölgesi
Konya Sanayi Alanı
Konya Sanayi Alanı
Konya Sanayi Alanı

Intertek
Konya Sanayi Alanı
Konya Sanayi Alanı
Konya Sanayi Alanı

 KÜLSAN
THERMOSET
www.kulsanthermoset.com.tr



Bergama

Unbreakable Plates



Square Bowl
4314 (ϕ = 14 cm, h = 5,5 cm)
220 gr. (Box / 96)



Bowl Mat
4217 (ϕ = 17 cm, h = 3,0 cm)
165 gr. (Box / 96)



Deep Plate
4224 (ϕ = 24 cm, h = 3,9 cm)
320 gr. (Box / 60)



Plate
4121 (ϕ = 21 cm, h = 2,9 cm)
285 gr. (Box / 72)



Plate
4126 (ϕ = 26 cm, h = 3,3 cm)
400 gr. (Box / 48)



Plate
4128 (ϕ = 28 cm, h = 3,5 cm)
485 gr. (Box / 48)



Plate
4131 (ϕ = 31 cm, h = 3,8 cm)
580 gr. (Box / 30)



Classic

Unbreakable Plates



Jam-Butter-Sauce Bowl
1306 (ϕ = 6 cm, h = 2,5 cm)
33 gr. (Box / 480)



Sauce Bowl
1308 (ϕ = 8 cm, h = 3,5 cm)
64 gr. (Box / 324)



Joker Bowl
1310 (ϕ = 10 cm, h = 4,5 cm)
105 gr. (Box / 144)



Joker Bowl
1312 (ϕ = 12,2 cm, h = 5,5 cm)
165 gr. (Box / 108)



Bowl Mat
1517 (ϕ = 17 cm, h = 2,6 cm)
220 gr. (Box / 96)



Plate
1117 (ϕ = 17 cm, h = 1,9 cm)
170 gr. (Box / 96)



Plate
1119 (ϕ = 19 cm, h = 1,8 cm)
210 gr. (Box / 96)



Plate
1121 (ϕ = 21 cm, h = 2,3 cm)
250 gr. (Box / 72)



Plate
1125 (ϕ = 25 cm, h = 2,5 cm)
360 gr. (Box / 48)



Plate
1025 (ϕ = 25 cm, h = 1,8 cm)
340 gr. (Box / 48)



Deep Plate
1221 (ϕ = 21 cm, h = 3,1 cm)
255 gr. (Box / 72)



Drop Deep Plate
1018 (ϕ = 18 cm, h = 2,8 cm)
220 gr. (Box / 96)
1019 (ϕ = 18,6 cm, h = 3,5 cm)
265 gr. (Box / 72)



Soft

Unbreakable Plates



Plate
2117 (ϕ = 17 cm, h = 2,0 cm)
200 gr. (Box / 96)



Plate
2119 (ϕ = 19 cm, h = 1,9 cm)
250 gr. (Box / 72)



Plate
2121 (ϕ = 21 cm, h = 2,1 cm)
300 gr. (Box / 72)



Plate
2123 (ϕ = 23 cm, h = 2,4 cm)
345 gr. (Box / 48)



Plate
2126 (ϕ = 26 cm, h = 2,5 cm)
440 gr. (Box / 48)



Plate
2128 (ϕ = 28 cm, h = 2,6 cm)
540 gr. (Box / 24)



Bowl
2314 (ϕ = 14,4 cm, h = 4,5 cm)
135 gr. (Box / 108)



Bowl
2316 (ϕ = 16 cm, h = 5,0 cm)
200 gr. (Box / 96)



Bowl
2319 (ϕ = 18,6 cm, h = 5,5 cm)
300 gr. (Box / 72)



Bowl
2323 (ϕ = 23 cm, h = 6,5 cm)
400 gr. (Box / 48)



Oval Plate
2429 (29x23 cm, h = 2,8 cm)
300 gr. (Box / 48)
2434 (34x26 cm, h = 3,3 cm)
615 gr. (Box / 30)
2440 (40x31 cm, h = 3,8 cm)
1050 gr. (Box / 18)

 KÜLSAN
THERMOSET
www.kulsanthermoset.com.tr

International

Unbreakable Plates



Square Oval Plate
3412 (12 x 9 cm, h = 3,0 cm)
85 gr. (Box / 144)



Square Oval Plate
3414 (14,5 x 10,5 cm, h = 3,3 cm)
120 gr. (Box / 96)
3417 (17,2 x 12,3 cm, h = 4,0 cm)
200 gr. (Box / 72)



Square Oval Plate
3420 (20 x 14,5 cm, h = 4,5 cm)
315 gr. (Box / 60)



Oval Plate
3425 (24,7 x 14 cm, h = 3,2 cm)
290 gr. (Box / 72)



Oval Plate
3429 (29 x 17 cm, h = 3,6 cm)
420 gr. (Box / 48)



Oval Plate
3434 (34 x 20 cm, h = 3,7 cm)
650 gr. (Box / 24)



Deep Plate
3219 (ϕ = 19,5 cm, h = 3,8 cm)
255 gr. (Box / 72)



Plate
3117 (ϕ = 17 cm, h = 2,0 cm)
200 gr. (Box / 72)



Plate
3120 (ϕ = 20 cm, h = 2,0 cm)
240 gr. (Box / 96)



Plate
3123 (ϕ = 23 cm, h = 2,0 cm)
341 gr. (Box / 48)



Plate
3126 (ϕ = 26 cm, h = 2,2 cm)
420 gr. (Box / 48)



Plate
3128 (ϕ = 28 cm, h = 2,3 cm)
550 gr. (Box / 24)



Accessories



Salt - Pepper - Toothpick Holder Set
1505 (20 x 7 cm, h = 7,7 cm)
300 gr. (Box / 48)



Salt & Pepper Set
1505 TB (Bot. ϕ = 5,2 cm
Upp. ϕ = 3,5 cm h = 7,1 cm
63 gr x 2 pcs. (Box / 120 Sets)



Toothpick Holder
1506 (Bot. ϕ = 4,7 cm
Upp. ϕ = 3,5 cm h = 5,4 cm
39 gr. (Box / 240)



Spice - Sugar Bowl with Lid
1510 (ϕ = 10 cm, h = 7 cm)
145 gr. (Box / 102)



Saucer
15111 (ϕ = 11 cm, h = 2,3 cm)
60 gr. (Box / 384)



Decorated Saucer
15112 (ϕ = 11 cm, h = 2,3 cm)
60 gr. (Box / 384)



Sugar Bowl
1512 (ϕ = 12 cm, h = 7,8 cm)
190 gr. (Box / 72)



Decorated Sugar Bowl
15121 (ϕ = 12 cm, h = 7,8 cm)
190 gr. (Box / 72)



Cup & Saucer
9117 (170 ml.)
325 gr. (Box / 72)



Ramekin
13030 (ϕ = 5,8 cm, 1 oz (30 ml)
21 gr. (Box / 560)
13060 (ϕ = 7 cm, 2 oz (60 ml)
50 gr. (Box / 432)



Soho Set
12406 (GN 2/4 20 mm & 5pcs. 3414)
1260 gr. (Box / 14)

**KÜLSAN
THERMOSET**
www.kulsanthermoset.com.tr

it's a girl



it's a boy



Baby

it's a boy



Unbreakable Baby Tableware



Baby Bowl
2316B (Ø = 16 cm, h = 5,0 cm)
200 gr. (Box / 96)



Baby Plate
2119B (Ø = 19 cm)
250 gr. (Box / 72)



Baby Plate
2121B (Ø = 21 cm)
200 gr. (Box / 72)



Baby Plate
3120B (Ø = 20 cm)
240 gr. (Box / 96)

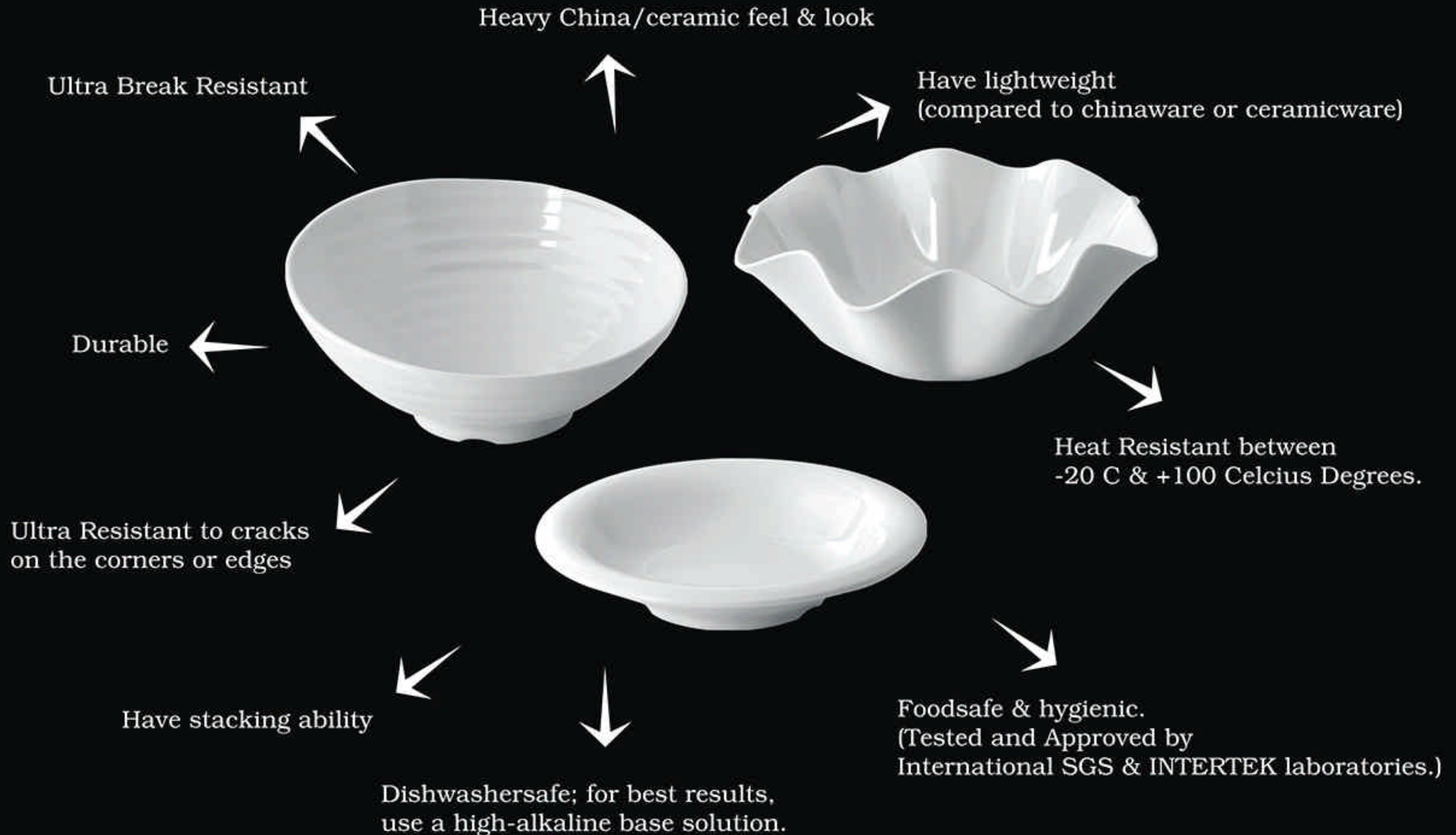


Baby Tray
360SB (31 x 23 cm)
250 gr. (Box / 48)



Gastro Boutique

Benefits of GASTRO BOUTIQUE





Gastro Boutique
Bowls



VENUS BOWL new
15033 (33 cm) - 1170 gr. (Box / 8)

ROSA BOWL
10235 (35 cm) - 820 gr. (Box / 10)



HERA BOWL
10132 (32 cm) - 810 gr. (Box / 8)



ROSA SMALL BOWL
10220 (20 cm) - 300 gr. (Box / 48)



IDA BOWL
10336 (36 cm) - 1375 gr. (Box / 8)

Colour Options



White



Black



Yellow



*Gastro Boutique
Platters*



MAKA PLATTER new
2230 (30 cm) - 685 gr. (Box / 12)



MINA PLATTER
10940 (40 cm) - 1300 gr. (Box / 15)
10945 (45 cm) - 1740 gr. (Box / 10)



SAKU PLATTER
10731 (31 x 31 cm) - 700 gr. (Box / 18)



HENA PLATTER new
14037 (37 X 27 cm) - 960 gr. (Box / 12)



NOVA PLATTER
11051 (51 x 36 cm) - 1480 gr. (Box / 12)
11064 (64 x 44 cm) - 2220 gr. (Box / 8)



BONO PLATTER
10850 (50 x 27 cm) - 1345 gr. (Box / 12)



ESTE PLATTER
10446 (46 x 46 cm) - 1870 gr. (Box / 6)



ESTE DEEP PLATTER
10546 (46 x 46 cm) - 2030 gr. (Box / 6)



RIVA PLATTER
10653 (53 x 32,5 cm) - 1500 gr. (Box / 6)

Colour Options





*Gastro Boutique
Self Service*



Breakfast Self Service Tray
103 (28 x 18,5 cm) - 320 gr. (Box / 50)



Eco Self Service Tray
105 (40 x 28 cm) - 585 gr. (Box / 25)
Self Service Tray
106 (40 x 28 cm) - 920 gr. (Box / 20)



Stacking Ability



Self Service Tray
104 (35 x 27 cm) - 510 gr. (Box / 25)



Tina Self Service Tray
107 (36 x 26 cm) - 600 gr. (Box / 30)

Colour Options



White



Black



Yellow



Gastro Boutique
Gn Containers





GN 1/1 Gastro Containers

11120 GN Container 1/1 - 53 x 32,5 cm - 20 mm) 1095 gr. (Box / 16)

11165 GN Container 1/1 - 53 x 32,5 cm - 65 mm) 2000 gr. (Box / 8)



GN 1/4 Gastro Containers

11400 GN Container 1/4 - 26,5 x 16,2cm - 100 mm) 770 gr. (Box / 28)

11465 GN Container 1/4 - 26,5 x 16,2 cm - 65 mm) 600 gr. (Box / 32)



11265

11365

GN 1/2 - 1/3 Gastro Containers

11265 GN Container 1/2 - 26,5 x 32,5 cm - 65 mm) 995 gr. (Box / 16)

11365 GN Container 1/3 - 17,6 x 32,5 cm - 65 mm) 780 gr. (Box / 24)



GN 2/4 Gastro Containers

12420 GN Container 2/4 - 53 x 16,2 cm - 20 mm) 600 gr. (Box / 32)

GN 1/6 Gastro Containers

11600 GN Container 1/6 - 17,6 x 16,2 cm - 100 mm)

570 gr. (Box/ 42)

Colour Options



White



Black



Yellow



arcoform[®]
Laminated Trays

Benefits of ARCOFORM TRAYS

→ Heat resistant from -10 C to +100 C degrees

→ Dishwashersafe at +85 C degrees



→ Stroke resistant

→ Non-slip version available

→ Break resistant

→ Resistant to alkaline

→ Resistant to acids

→ Resistant to ultraviole

→ Can be used in Thermal Boxes

Care Instructions for ARCOFORM TRAY

- * Do not wash the non-slip trays in the dishwasher, hand washing recommended.
- * Do not place them in an oven, microwave or hot water tubs/buffets.
- * Do not place them on top or under flame or grill.
- * Do not use harsh or abrasive cleansers, steel wool, or scrubbers/ scouring pads to clean.
- * Thoroughly dry before stacking

CERTIFICATIONS

SGS
TEST REPORT
 No: 43260-R3 Date: January 24, 2007 Page 1 of 3

KULAN MELAMIN PLASTIK BAK VE TICARET
 Vahide Derya Nevri Kadir Arslanlar Cad.
 No: 18 Kızılaybulvarı Çayyolu / Beşiktaş / İstanbul / TÜRKİYE
 TEL: +90 212 437 50 00 FAX: +90 212 518 18 00
 E-MAIL: kulans@kulans.com.tr
 Or. De. İstanbul / So. Yürüm / Kızılaybulvarı

The following samples were submitted into identified by the clients as:

SAMPLE DESCRIPTION: 12 Laminated Tray made of plastic (Bak Tray) for use in buffet.
PERIOD OF USE: November 2006 to December 2006 30 January 2007
APPROVAL NO: Nil given
TEST RESULTS: Please refer to report

Issued in Istanbul
 For and on behalf of
 SGS Sımplice Çözümler Etiler

Kartal Servis A.Ş.
 Etiler Yolu
 Çözümler / Çözümler / Çözümler

SGS
 Sımplice Çözümler Etiler
 Servis A.Ş.
 Kartal Servis A.Ş.
 Etiler Yolu
 Çözümler / Çözümler / Çözümler


SGS
TEST REPORT
 No: 43260-R3 Date: January 24, 2007 Page 2 of 3

Test Method	Results	Remarks
Determination of Surface Structure Surface Method	No change and observed 90° gradient surface	Normal and Non-slip surface
Dark Stain Test Surface Method	No visual change was observed after 25 cycle dishwasher washing @ 60° C	No change
Stain Resistance Test Surface Method	No dark stain was observed after testing in the test tray	No change
Braking Resistance Test Surface Method	No dark stain was observed after 20 kg force	No change
Thermal Resistance Test Surface Method	No visual change was observed at +120 °C No visual change was observed at -120 °C	No change
Resistance to Acid Surface Method	No visual change @ pH 4 acid solution @ 25 °C room temperature	No change
Resistance to Alkaline Surface Method	No visual change @ pH 12 alkaline solution @ 25 °C room temperature	No change
Ultrasonic Resistance Test Surface Method	No visual change	No change

SGS
 Sımplice Çözümler Etiler
 Servis A.Ş.
 Kartal Servis A.Ş.
 Etiler Yolu
 Çözümler / Çözümler / Çözümler

SGS
TEST REPORT
 No: 43260-R3 Date: January 24, 2007 Page 3 of 3

PHOTO APPENDIX



--- End of Report ---

SGS
 Sımplice Çözümler Etiler
 Servis A.Ş.
 Kartal Servis A.Ş.
 Etiler Yolu
 Çözümler / Çözümler / Çözümler

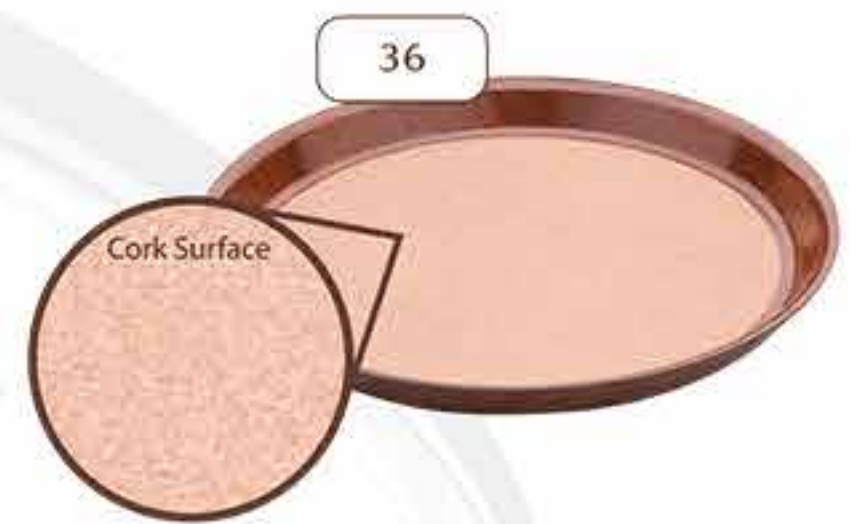


Laminated Trays

arcoform®
For Hotels, Restaurants & Catering



- 6143 61x43 cm
- 5337 53x37 cm (euronorm)
- 4432 44x32 cm
- 3424 34,5x24 cm
- 5332 53x32,5 cm (gastronorm)
- 4934 49x34 cm
- 4636 46x36 cm
- 43 43 cm
- 38 38 cm
- 36 36 cm Deep Tray
- 33 33 cm



Customer's decors are available.

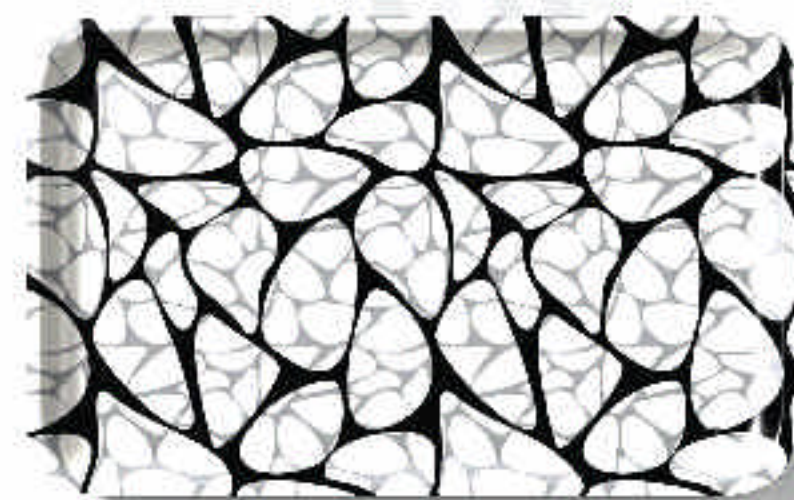
K 168 - JOY

4934 (49 x 34 cm Tray, Box / 24)
3424 (34,5 x 24,5 cm Tray, Box / 48)
38 (38 cm Tray, Box / 24)



K 171 - MOONSTONE

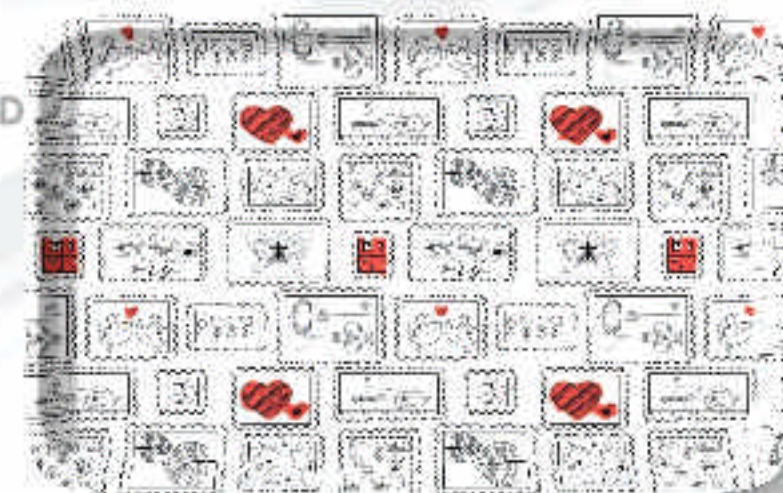
4934 (49 x 34 cm Tray, Box / 24)
3424 (34,5 x 24,5 cm Tray, Box / 48)
38 (38 cm Tray, Box / 24)



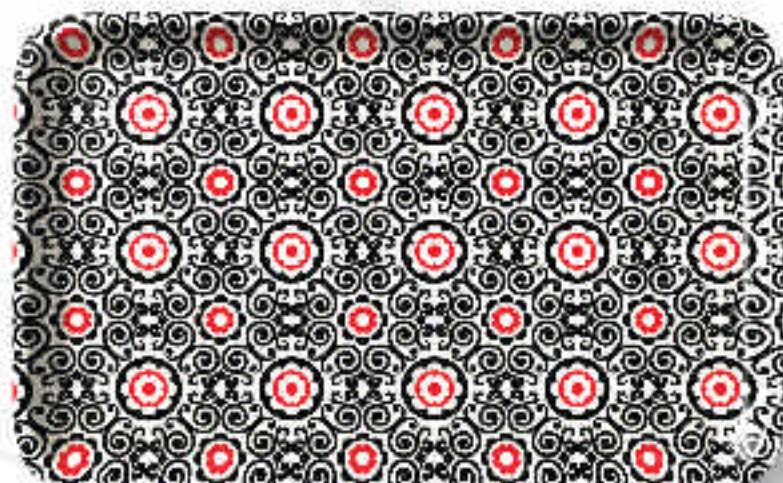
K 169 - LILIA



K 172 - POSTCARD



K 170 - MARRAKECH



K 173 - SKULL



Fiber Polyester Trays

3753FP - (53 x 37 cm - 25 pcs/ctn.)



Fast Food Trays

3753 - (53,5 x 37,5 cm ABS Tray - 24 pcs/ctn.)

3244 - (43,6 x 31,2 cm PP Tray - 36 pcs/ctn.)

2736 - (35,6 x 26,8 cm PP Tray - 48 pcs/ctn.)



Rubber Coated PP Trays

SP4636 - (46 x 36 cm Rubber PP Tray - 14 pcs/ctn.)

SP3527 - (35 x 27 cm Rubber PP Tray - 14 pcs/ctn.)

SP40 - (40 cm Rubber PP Tray - 14 pcs/ctn.)

SP35 - (35 cm Rubber PP Tray - 14 pcs/ctn.)



Benefits of FIBER POLYESTER Trays

- * Dishwashersafe at professional machines.
- * Heat resistant from -40 C to +140 C degrees.
- * Extremely break resistant and suitable for intensive use.
- * Totally waterproof.
- * Does not retain stains.
- * Does not warp at high or low temperatures.
- * Has stacking lugs for easier drying and quick accurate stacking.
- * Stroke resistant.
- * Shock resistant.
- * Resistant to acids, alkaline, ultraviolet.
- * Can be used in Thermal Boxes.



Premium Tumbler
5250 (250 ml) , **5300** (300 ml) , **5360** (360 ml) , **5400** (400 ml)



Beer Mug
5156 (568 ml) , **5500** (470 ml)



Premium
Champagne - 5118
Ice - Cream - 5600 (230 ml)
Whisky Glass - 5114 (250 ml)
Shot Glass - 5105 (60 ml)



Tulip Tumbler
5284 (284 ml) , **5397** (397 ml) , **5568** (568 ml)



Premium
Martini - 5128 (280 ml)
Margherita - 5330



Tumbler
5200 (240 ml) , **5112** (360 ml) , **5140** (440 ml)



Wine Goblet
5700 (250 ml) , **5132** (320 ml)



Premium Long Drink
5260 (260 ml) , **5133** (320 ml)



Benefits of POLYCARBONATE Products

- * Ultra break resistant.
- * High impact resistance and shatter resistant.
- * Outstanding durability.
- * Clear like glass.
- * Have lightweight
- * Foodsafe & hygienic.
- * Dishwashersafe; for best results, use an alkali free detergent.
- * Heat resistant between -20 C & +120 Celcius degrees.

Care Instructions for POLYCARBONATE Products

- * Use with cold drinks.
- * Avoid drinking aniseed based drinks in PC tumblers such as : Raki, Ouzo, Anis, Ricard, Pernod as they will cause clouding of the plastic.
- * Do not place them in an oven or microwave.
- * Do not use harsh or abrasive cleansers, steel wool, or scrubbers/scouring pads to clean.
- * Polycarbonate products may be scratched if stacked together.

CLASSIC

CODE	NAME	SIZE	WEIGHT +/- 5 %	BARCODE EAN.	INNER PACK / CARTON QTY.	DIMENSION CM. W x L x H	VOLUME CBM.	NET KG.	GROSS KG.
1306	Jam-Butter Sauce Bowl	Ø= 6 cm h= 2,5 cm	33 gr	86967600 13064	24 / 480	27 x 64 x 25	0,0432	15,840	17,620
1308	Sauce Bowl	Ø= 8 cm h= 3,5 cm	64 gr	86967600 13088	54 / 324	27 x 52 x 49	0,0687	20,740	22,100
1310	Bowl	Ø= 10 cm h= 4,5 cm	105 gr	86967600 13101	6 / 144	33 x 43 x 38	0,0539	15,240	16,040
1312	Joker Bowl	Ø= 12,2 cm h= 5,5 cm	165 gr	86967600 13125	6 / 108	38,5 x 38,5 x 45	0,0667	17,820	18,420
1517	Bowl Mat	Ø= 17 cm h= 2,6 cm	220 gr	86967600 15174	12 / 96	37 x 37 x 30	0,0411	21,060	21,660
1117	Plate	Ø= 17 cm h= 1,9 cm	170 gr	86967600 11176	12 / 96	35 x 35 x 25	0,0306	16,320	16,920
1119	Plate	Ø= 19 cm h= 1,8 cm	210 gr	86967600 11190	12 / 96	40 x 40 x 24	0,0384	20,160	21,180
1121	Plate	Ø= 21 cm h= 2,3 cm	250 gr	86967600 11213	12 / 72	22 x 43 x 38	0,0359	18,000	18,600
1025	Plate	Ø= 25 cm h= 1,8 cm	340 gr	86967600 10254	12 / 48	27 x 51 x 24	0,0330	16,320	16,920
1125	Plate	Ø= 25 cm h= 2,5 cm	360 gr	86967600 11251	12 / 48	27 x 51 x 24	0,0330	17,280	17,880
1221	Deep Plate	Ø= 21 cm h= 3,1 cm	255 gr	86967600 12210	12 / 72	22 x 43 x 38	0,0359	18,360	18,960
1018	Drop Deep Plate	Ø= 18 cm h= 2,8 cm	220 gr	86967600 10186	12 / 96	38 x 38 x 27	0,0390	21,120	21,720
1019	Drop Deep Plate	Ø= 18,6 cm h= 3,5 cm	265 gr	86967600 10193	12 / 72	21 x 37 x 40	0,0311	19,080	19,680

SOFT

CODE	NAME	SIZE	WEIGHT +/- 5 %	BARCODE EAN.	INNER PACK / CARTON QTY.	DIMENSION CM. W x L x H	VOLUME CBM.	NET KG.	GROSS KG.
2117	Plate	Ø= 17 cm h= 2 cm	200 gr	86967600 21175	12 / 96	36 x 36 x 25	0,0324	19,200	19,800
2119	Plate	Ø= 19 cm h= 1,9 cm	250 gr	86967600 21199	12 / 72	21 x 40 x 36	0,0302	18,000	18,600
2121	Plate	Ø= 21 cm h= 2,1 cm	300 gr	86967600 21212	12 / 72	23 x 43 x 38	0,0376	21,600	22,200
2123	Plate	Ø= 23 cm h= 2,4 cm	345 gr	86967600 21236	12 / 48	25 x 46 x 30	0,0345	16,560	17,160
2126	Plate	Ø= 26 cm h= 2,5 cm	440 gr	86967600 21267	6 / 48	28 x 52 x 32	0,0446	21,120	21,720
2128	Plate	Ø= 28 cm h= 2,6 cm	540 gr	86967600 21281	6 / 24	29 x 29 x 31	0,0261	12,960	13,560
2314	Bowl	Ø= 14,4 cm h= 4,5 cm	135 gr	86967600 23148	18 / 108	32 x 45 x 24	0,0346	14,700	15,500
2316	Bowl	Ø= 16 cm h= 5 cm	200 gr	86967600 23162	12 / 96	33 x 33 x 32	0,0348	19,200	19,800
2319	Bowl	Ø= 18,6 cm h= 5,5 cm	300 gr	86967600 23193	12 / 72	21 x 57 x 35	0,0419	21,600	22,200
2323	Bowl	Ø= 23 cm h= 6,5 cm	400 gr	86967600 23230	6 / 48	25 x 48 x 35	0,0420	19,200	19,800
2429	Oval Plate	L= 29 cm W= 23 cm h= 2,8 cm	300 gr	86967600 24299	12 / 48	31 x 47 x 25	0,0364	14,400	15,000
2434	Oval Plate	L= 34 cm W= 26 cm h= 3,3 cm	615 gr	86967600 24343	6 / 30	28 x 34 x 34	0,0324	18,450	19,050
2440	Oval Plate	L= 40 cm W= 31 cm h= 3,8 cm	1050 gr	86967600 24404	6 / 18	33 x 40 x 25	0,0330	18,900	19,500

INTERNATIONAL									
CODE	NAME	SIZE	WEIGHT +/- 5 %	BARCODE EAN.	INNER PACK / CARTON QTY.	DIMENSION CM. W x L x H	VOLUME CBM.	NET KG.	GROSS KG.
3412	Square Oval Plate	L= 12 cm W= 9 cm h= 3 cm	85 gr	86967600 34120	12 / 144	25 x 26 x 28	0,0182	12,240	12,840
3414	Square Oval Plate	L= 14,5 cm W= 10,5 cm h= 3,3 cm	120 gr	86967600 34144	12 / 96	23 x 31 x 26	0,0185	11,520	12,120
3417	Square Oval Plate	L= 17,2 cm W= 12,3 cm h= 4 cm	200 gr	86967600 34175	12 / 72	19 x 38 x 31	0,0224	14,400	15,000
3420	Square Oval Plate	L= 20 cm W= 14,5 cm h= 4,5 cm	315 gr	86967600 34205	6 / 60	31 x 23 x 41	0,0292	18,900	20,000
3425	Oval Plate	L= 24,7 cm W= 14 cm h= 3,2 cm	290 gr	86967600 34250	12 / 72	26 x 43 x 30	0,0335	20,880	21,480
3429	Oval Plate	L= 29 cm W= 17 cm h= 3,6 cm	420 gr	86967600 34298	12 / 48	30 x 35 x 32	0,0336	20,160	20,760
3434	Oval Plate	L= 34 cm W= 20 cm h= 3,7 cm	650 gr	86967600 34342	12 / 24	21 x 35 x 34	0,0250	15,600	16,200
3219	Deep Plate	Ø= 19 cm h= 3,8 cm	255 gr	86967600 32195	12 / 72	21 x 39 x 40	0,0328	18,360	18,960
3117	Plate	Ø= 17 cm h= 2 cm	200 gr	86967600 31174	12 / 72	19 x 36 x 40	0,0274	14,400	15,000
3120	Plate	Ø= 20 cm h= 2 cm	240 gr	86967600 31204	12 / 96	41 x 41 x 23	0,0387	23,040	23,640
3123	Plate	Ø= 23 cm h= 2 cm	341 gr	86967600 31235	12 / 48	24 x 47 x 23	0,0259	15,920	16,520
3126	Plate	Ø= 26 cm h= 2,2 cm	420 gr	86967600 31266	12 / 48	27 x 53 x 26	0,0372	20,160	20,760
3128	Plate	Ø= 28 cm h= 2,3 cm	550 gr	86967600 31280	6 / 24	30 x 30 x 29	0,0261	13,200	13,800

BERGAMA									
CODE	NAME	SIZE	WEIGHT +/- 5 %	BARCODE EAN.	INNER PACK / CARTON QTY.	DIMENSION CM. W x L x H	VOLUME CBM.	NET KG.	GROSS KG.
4314	Square Bowl	Ø= 14 cm h= 5,5 cm	220 gr	86967600 43146	6 / 96	29 x 55 x 30	0,0479	21,120	23,500
4217	Bowl Mat	Ø= 17 cm h= 3,0 cm	165 gr	86967600 42170	12 / 96	31 x 31 x 24	0,0226	15,840	16,120
4224	Square Deep Plate	Ø= 24 cm h= 3,9 cm	320 gr	86967600 42248	6 / 60	23 x 44 x 30	0,0304	18,960	19,560
4121	Square Plate	Ø= 21 cm h= 2,9 cm	285 gr	86967600 41210	12 / 72	20 x 40 x 39	0,0312	20,240	20,700
4126	Square Plate	Ø= 26 cm h= 3,3 cm	400 gr	86967600 41265	6 / 48	48 x 23 x 28	0,0306	19,200	19,800
4128	Square Plate	Ø= 28 cm h= 3,5 cm	485 gr	86967600 41289	12 / 48	25,5 x 51 x 30	0,0390	23,280	23,860
4131	Square Plate	Ø= 31 cm h= 3,8 cm	580 gr	86967600 41319	6 / 30	29 x 29 x 40	0,0336	17,400	18,000
ACCESSORIES									
1505	Salt-Pepper-Toothpick Holder Set	L= 20 cm W= 7,0 cm h= 7,7 cm	300 gr	86967600 15051	8 / 48	27 x 52 x 49	0,0668	15,460	16,060
1505TB	Salt & Pepper Set	Bot. Ø= 5,2 cm Upp. Ø= 3,5 cm h= 7,1 cm	63 gr x 2 pcs.	86967601 15058	6 / 120 Sets	37 x 47 x 43	0,0748	15,120	17,700
1506	Toothpick Holder	Bot. Ø= 4,7 cm Upp. Ø= 3,5 cm h= 5,4 cm	39 gr	86967600 15068	12 / 240	37 x 47 x 43	0,0748	13,440	14,040
1510	Spice - Sugar Bowl with Lid	Ø= 10 cm h= 7 cm	145 gr	86967601 15105	6 / 102	33 x 43 x 38	0,0539	14,800	15,800
15111	Saucer	Ø= 11 cm h= 2,3 cm	60 gr	86967601 15119	48 / 384	47 x 47 x 25	0,0552	24,760	25,360
1512	Sugar Bowl	Ø= 12 cm h= 7,8 cm	190 gr	86967600 15129	12 / 72	27 x 52 x 49	0,0668	14,640	15,240
9117	Cup & Saucer	170 ml	325 gr	86967600 91178	12 / 72	31 x 56 x 39	0,0667	23,400	24,800
13030	1 oz Ramekin (30 ml)	Ø= 5,8 cm h= 2,7 cm	21 gr	86967601 30303	28 / 560	27 x 64 x 25	0,0432	11,760	11,920
13060	2 oz Ramekin (60 ml)	Ø= 7 cm h= 4 cm	50 gr	86967601 30600	72 / 432	27 x 52 x 49	0,0668	1,600	3,400

POLYCARBONATE						
CODE	NAME	SIZE	CTN. / QTY.	DIMENSION CM. W x L x H	NET KG.	GROSS KG.
5250	Premium Tumbler	250 ml	100	40 x 29 x 36	10,000	10,700
5300	Premium Tumbler	300 ml	75	40 x 29 x 36	09,800	10,500
5360	Premium Tumbler	360 ml	60	40 x 29 x 36	08,400	09,000
5400	Premium Tumbler	400 ml	60	40 x 29 x 36	09,800	10,500
5118	Premium Champagne Glass	180 ml	24	39 x 25 x 22	02,810	03,210
5128	Premium Martini	280 ml	48	41 x 41 x 37	03,700	04,400
5330	Premium Margherita Glass	350 ml	48	41 x 41 x 37	03,360	03,960
5260	Premium Long Drink	260 ml	72	40 x 29 x 36	04,300	04,800
5133	Premium Long Drink	320 ml	72	40 x 29 x 36	07,000	07,700
5284	Tulip Tumbler	284 ml	150	41 x 41 x 37	08,400	09,100
5397	Tulip Tumbler	397 ml	150	41 x 41 x 37	10,800	11,500
5568	Tulip Tumbler	568 ml	100	41 x 41 x 37	09,300	09,900
5114	Whisky Glass	250 ml	100	41 x 41 x 37	04,600	05,300
5105	Shot Glass	60 ml	240	40 x 25 x 20	07,700	08,100
5200	Tumbler	240 ml	250	40 x 29 x 36	09,300	10,000
5112	Tumbler	360 ml	150	41 x 41 x 37	08,600	09,300
5140	Tumbler	440 ml	150	41 x 41 x 37	10,500	11,200

POLYCARBONATE						
CODE	NAME	SIZE	CTN. / QTY.	DIMENSION CM. W x L x H	NET KG.	GROSS KG.
5700	Wine Goblet	250 ml	120	40 x 60 x 40	05,900	06,600
5132	Premium Wine Goblet	320 ml	50	41 x 41 x 37	06,000	06,600
5600	Ice Cream Cup	230 ml	100	41 x 41 x 37	05,200	05,900
5156	Premium Beer Mug	568 ml	30	40 x 30 x 37	06,900	07,500
5500	Beer Mug	470 ml	100	40 x 60 x 40	11,500	12,200
PLASTIC - ABS / PP TRAYS						
3753	ABS Tray	53,5 x 37,5 cm	24	54 x 41 x 25	18,200	18,800
3244	PP Tray	43,6 x 31,2 cm	36	45 x 33 x 28	18,000	18,600
2736	PP Tray	35,6 x 26,8 cm	48	57 x 37 x 18	15,200	15,800



ARCOFORM - LAMINATED TRAYS										
CODE	NAME	SIZE	BARCODE EAN. NORMAL	BARCODE EAN. NON-SLIP	BARCODE EAN. CORK	CTN./ QTY.	DIMENSION CM. W x L x H	VOLUME CBM.	NET KG.	GROSS KG.
6143	Laminated Tray	61 x 43 cm	86967606-14315	86967606-14322	86967606-14339	12	44 x 62 x 10	0,0273	13,400	14,200
5337	Euronorm Laminated Tray	53 x 37 cm	86967605-33715	86967605-33722	86967605-33739	24	38 x 54 x 14	0,0287	18,900	19,400
5337 eco	Euronorm Laminated Tray	53 x 37 cm	86967605-33739	86967605-33749		24	38 x 54 x 10	0,0205	16,000	16,800
5332	Gastronorm Laminated Tray	53 x 32,5 cm	86967605-33210	86967605-33227	86967605-33234	24	34 x 55 x 12	0,0224	15,800	16,400
4636	Laminated Tray	46 x 36 cm	86967604-63616	86967604-63623	86967604-63630	24	37 x 47 x 11	0,0191	13,800	15,500
4934	Laminated Tray	49 x 34 cm	86967604-93415		86967604-93439	24	36 x 50 x 13	0,0225	14,500	15,640
4432	Laminated Tray	44 x 32 cm	86967604-43212	86967604-43229	86967604-43236	36	34 x 45 x 18	0,0275	17,700	18,500
3424	Laminated Tray	34,5 x 24 cm	86967603-42416	86967603-42423	86967603-42430	48	35 x 49 x 10	0,0172	12,500	13,200
43	Round Laminated Tray	∅ = 43 cm	86967600-43016	86967600-43023	86967600-43030	24	44 x 44 x 12	0,0232	13,500	14,200
38	Round Laminated Tray	∅ = 38 cm	86967600-38012	86967600-38029	86967600-38036	24	39 x 39 x 11	0,0167	09,800	10,500
33	Round Laminated Tray	∅ = 33 cm	86967600-32010	86967600-32027	86967600-32034	36	34 x 34 x 14	0,0162	09,700	10,500
36	Round Deep Laminated Tray	∅ = 33 cm h = 3 cm		86967600-36025	86967600-03607	24	37 x 37 x 19	0,0260	10,700	11,300





www.kulsan.com.tr

KÜLSAN MELAMİN PLASTİK SAN. TİC. A.Ş.

Validesuyu Mevkii, Kadir Akdoğan Cad. No: 18

Küçükköy, 34255 GAZİOSMANPAŞA / İSTANBUL / TURKEY

Tel : +90 212 477 5 666

Fax : +90 212 618 1 970

E-Mail : kulsan@kulsan.com.tr